



Fyrite® User Software

1. Introduction

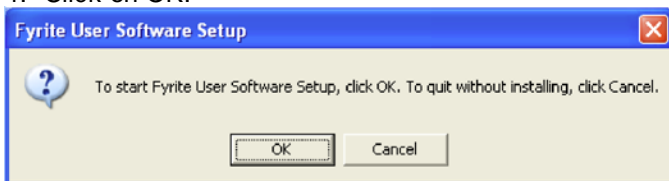
This manual describes how to install Fyrite® User Software onto computers that run under the Windows XP, Windows Vista, Windows 7, and Windows 8 operating systems. (Note that the Fyrite® User Software is not compatible with Windows operating systems prior to Windows XP.) Select the appropriate installation section based on your operating system.

Refer to the software overview section at the end of this document for information on menu items and general operation.

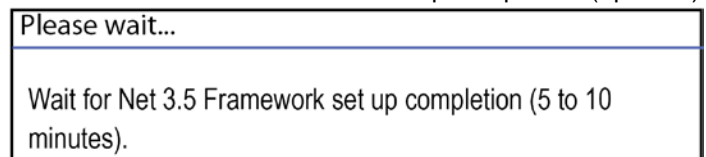
2. Installation: Windows XP

After the CD is loaded, the Setup window will be displayed. Click on OK. If applicable, wait for the Net 3.5 Framework set up to complete. Then follow the instructions listed below.

1. Click on OK.



2. Wait for Net 3.5 Framework set up completion (optional)



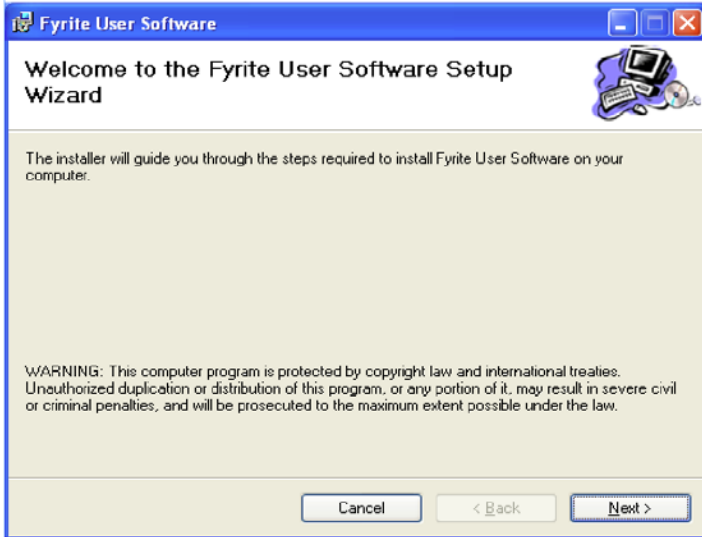
3. Click on Next.



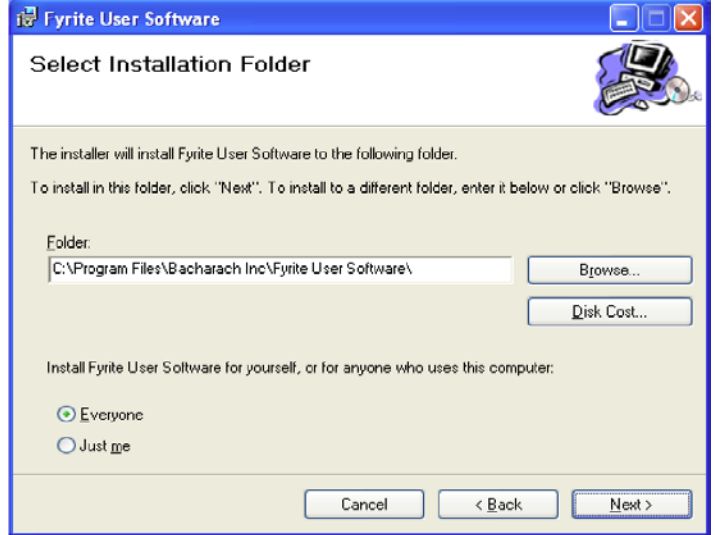
4. Click on Finish.



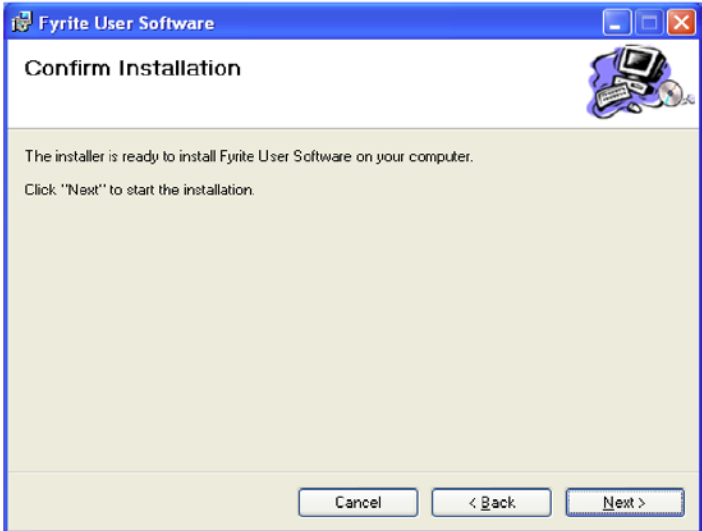
5. Click on Next.



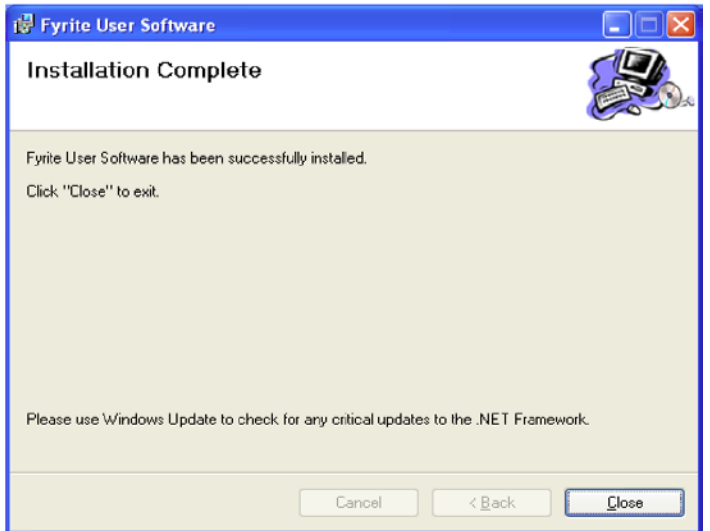
6. Click on Next.



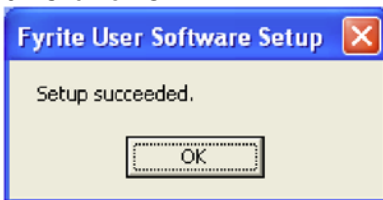
7. Click on Next.



8. Click on Close.



9. Click on OK.



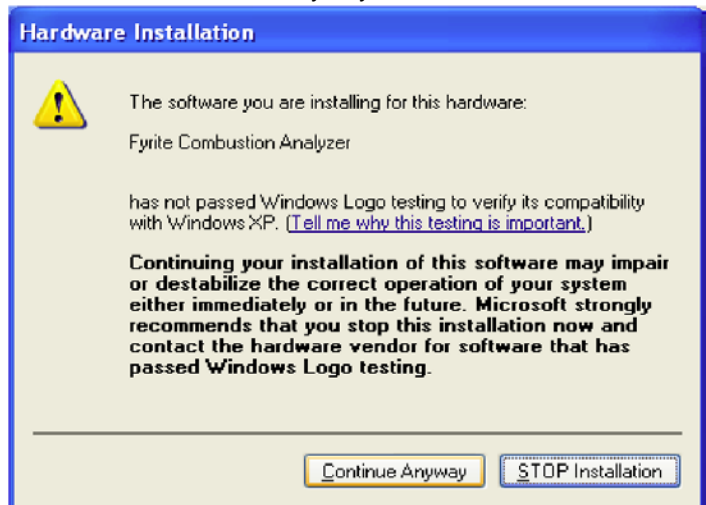
10. After installation:

- Open Fyrite® User Software via the desktop icon.
- Connect the instrument to the PC with a USB cable.
- Power up the unit.
- When first connected, a "Found New Hardware Wizard" screen will be displayed.

11. Select “No, not this time”. Click on Next.



12. Click on “Continue Anyway”.



13. Click on Finish.

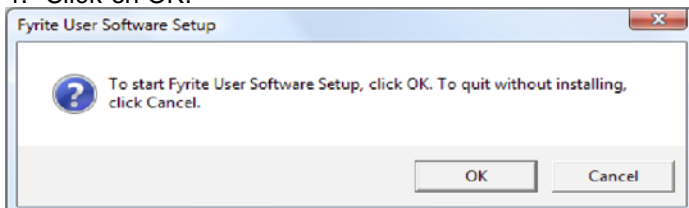


14. For further information about the use of this product, refer to your analyzer’s user manual.

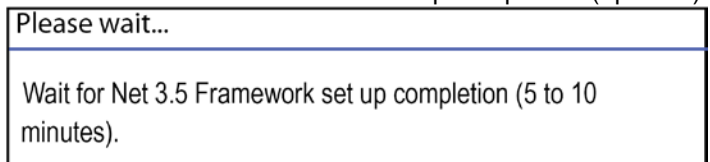
3. Installation: Windows Vista

After loading the CD, the Security window will be displayed. Click on OK. If applicable, wait for the Net 3.5 Framework set up to complete. Then follow the instructions listed below.

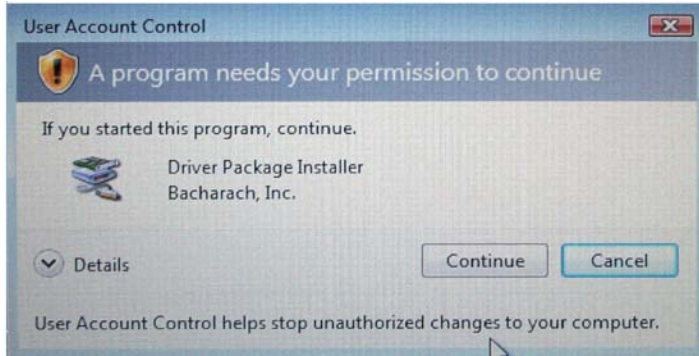
1. Click on OK.



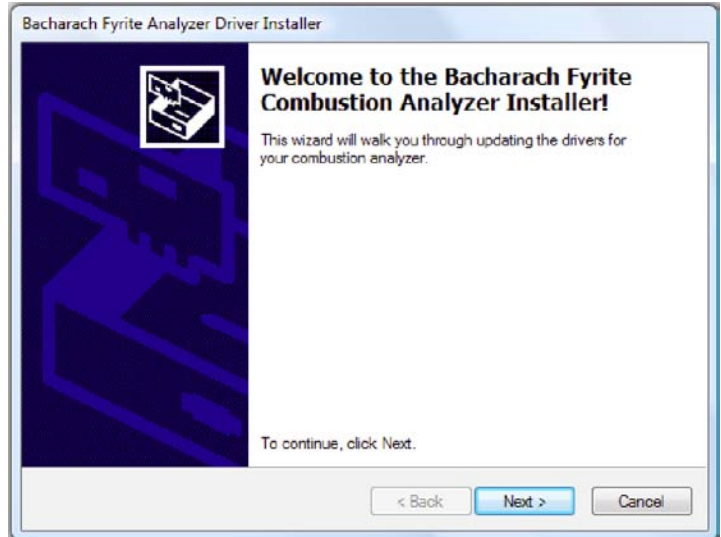
2. Wait for Net 3.5 Framework set up completion (optional)



3. Click on Continue.



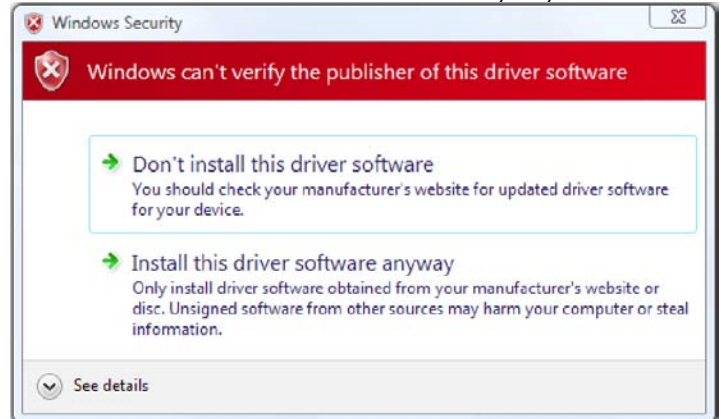
4. Click on Next.



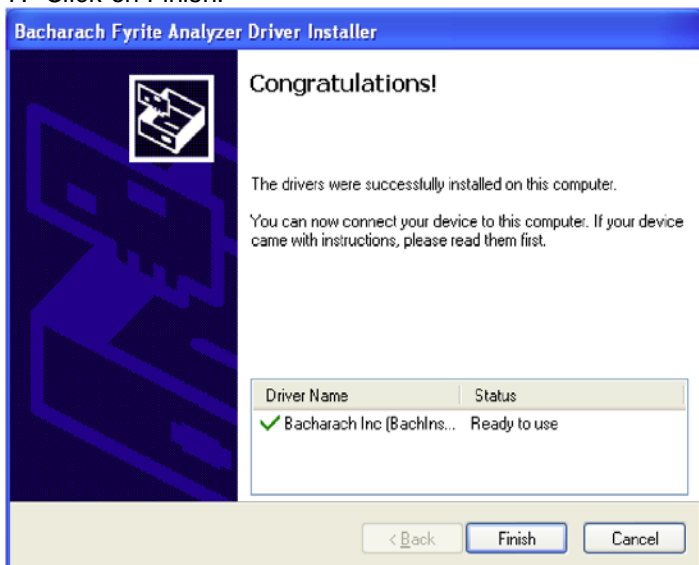
5. Click on Install.



6. Click on "Install this driver software anyway".



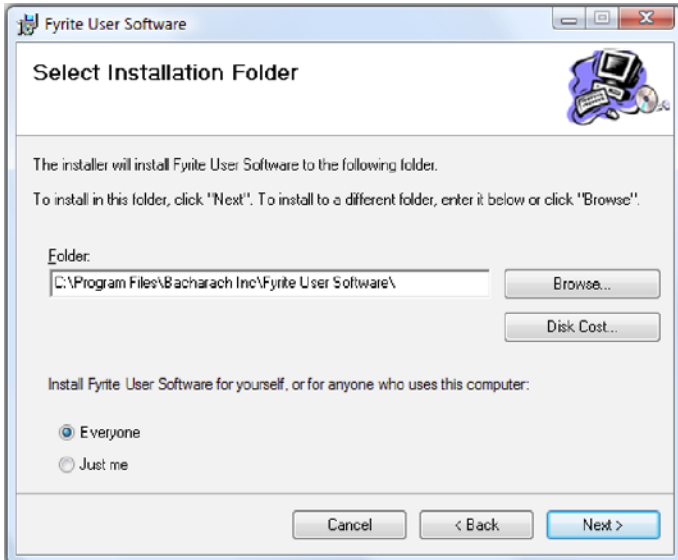
7. Click on Finish.



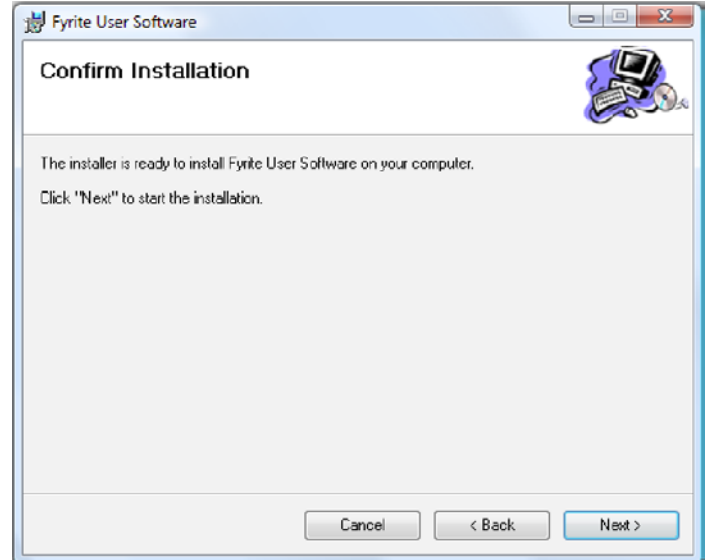
8. Click on Next.



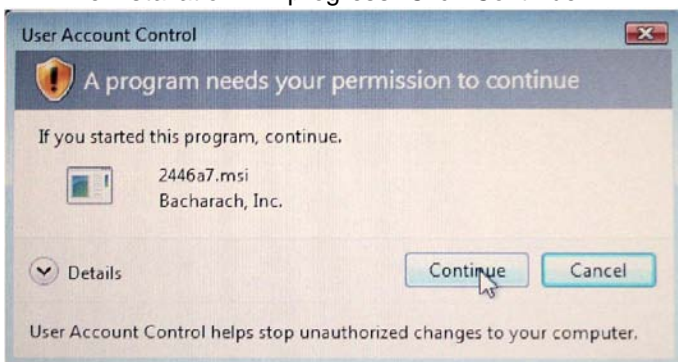
9. Click on Next.



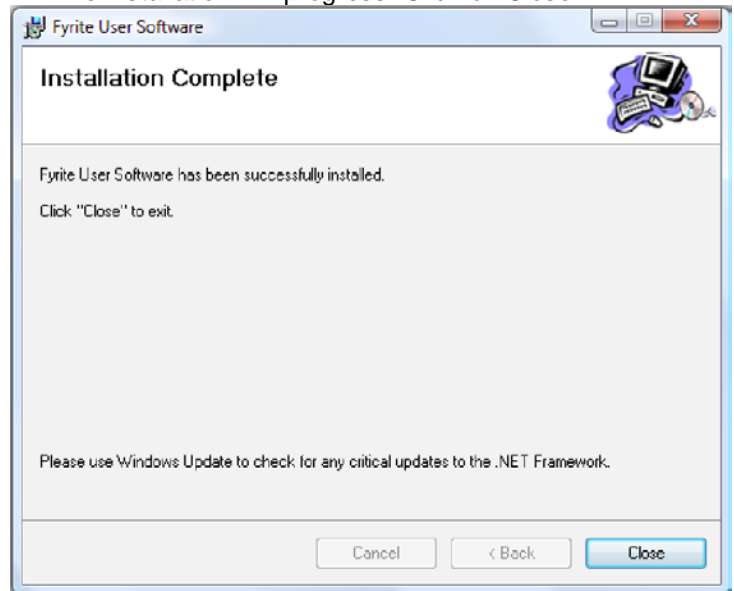
10. Click on Next.



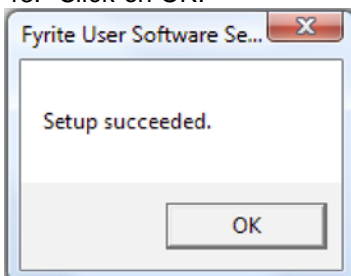
11. The installation will progress. Click Continue.



12. The installation will progress. Click on Close.



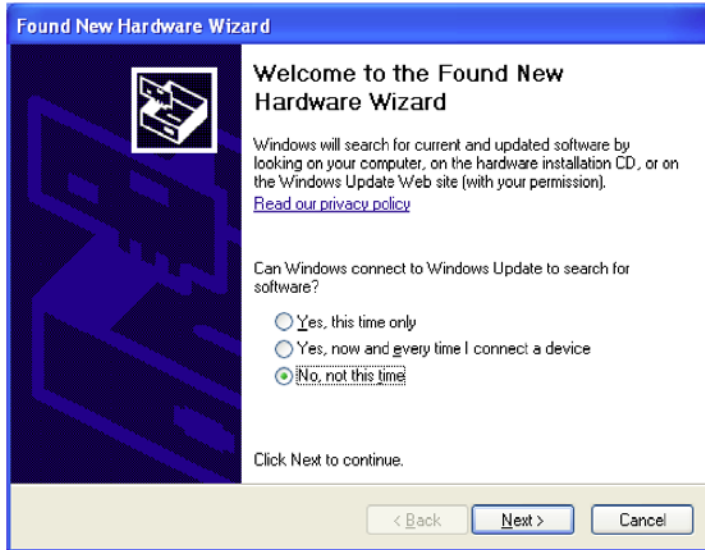
13. Click on OK.



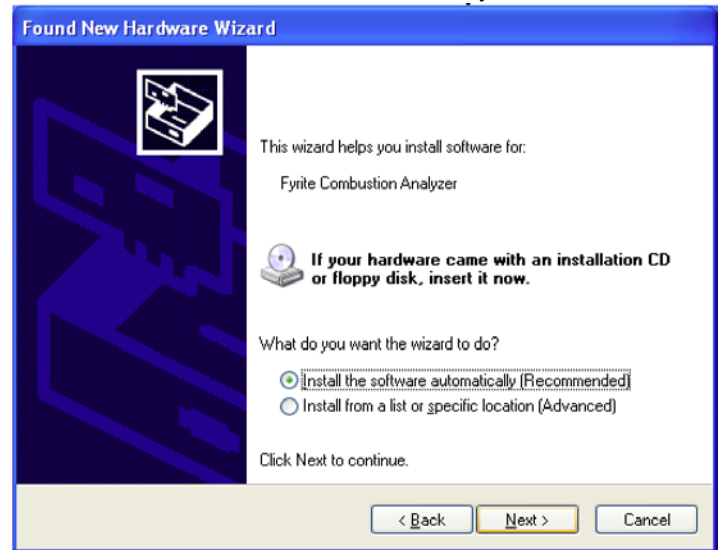
14. After installation

- Open Fyrite® User Software via the desktop icon.
- Connect the instrument to the PC with a USB cable.
- Power up the unit.
- When first connected, a “Found New Hardware Wizard” screen will be displayed.

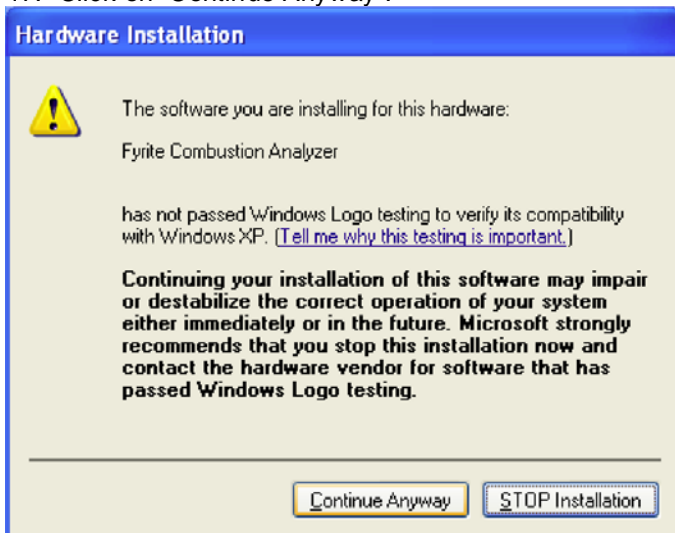
15. Select “No, not this time”. Click on Next.



16. Select “Install software automatically”. Click on Next.



17. Click on “Continue Anyway”.



18. Click on Finish.

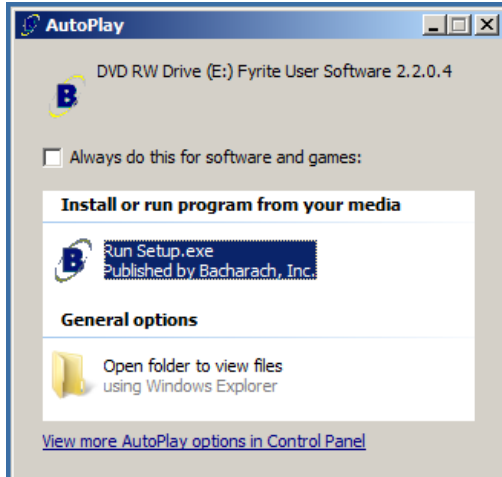


19. For further information about the use of this product, refer to your analyzer’s user manual.

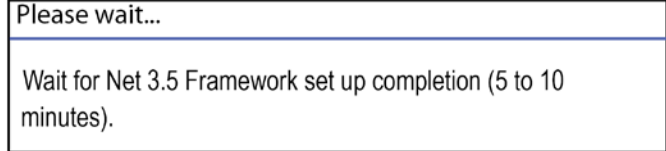
4. Installation: Windows 7

After loading the CD, the AutoPlay window will be displayed. Click on Run Setup.EXE. If applicable, wait for the Net 3.5 Framework set up to complete. Then follow the instructions listed below.

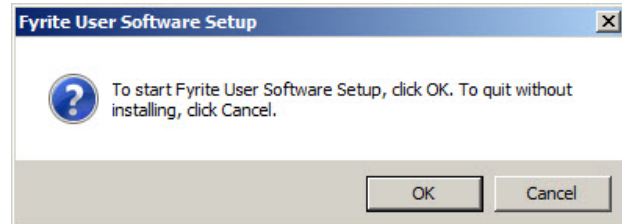
1. Click on Run Setup.exe.



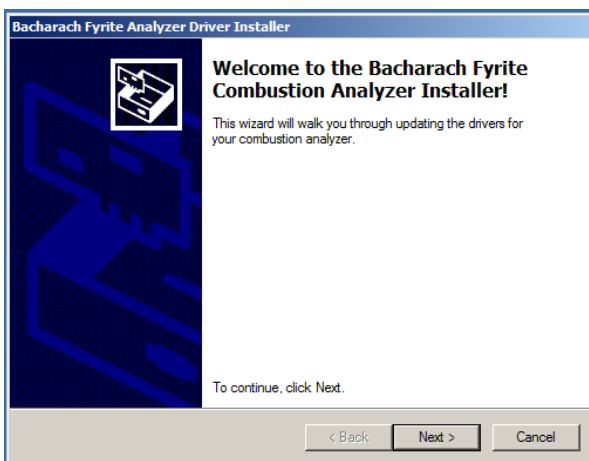
2. Wait for Net 3.5 Framework set up completion (optional).



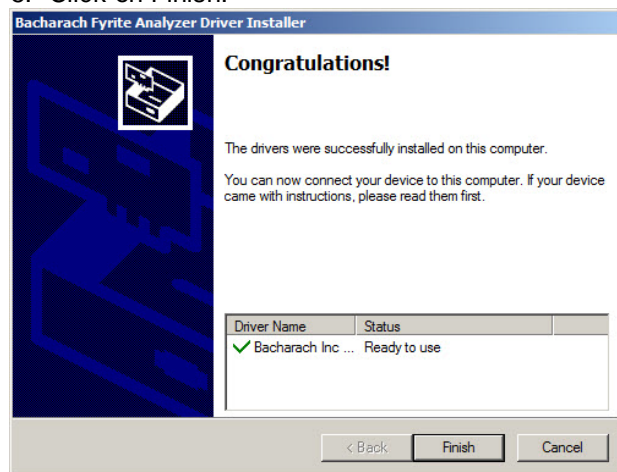
3. Click on OK.



4. Click on Next.



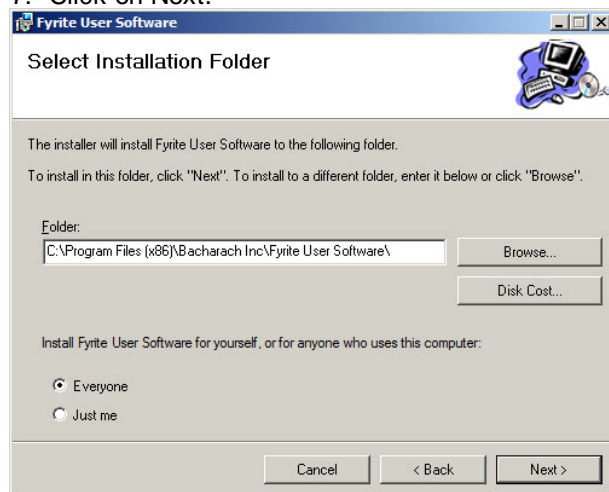
5. Click on Finish.



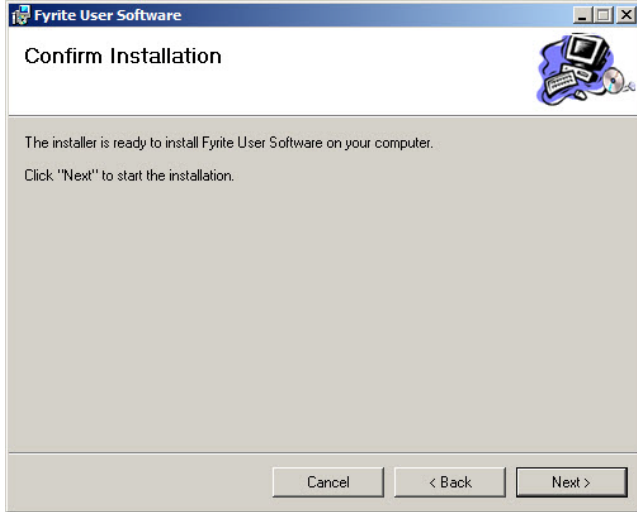
6. Click on Next.



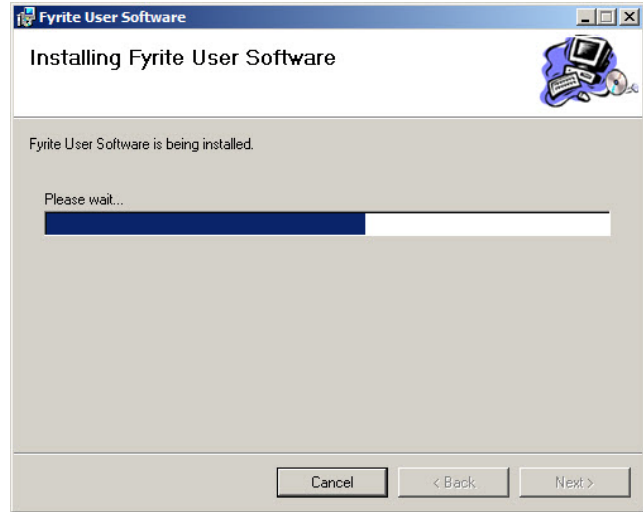
7. Click on Next.



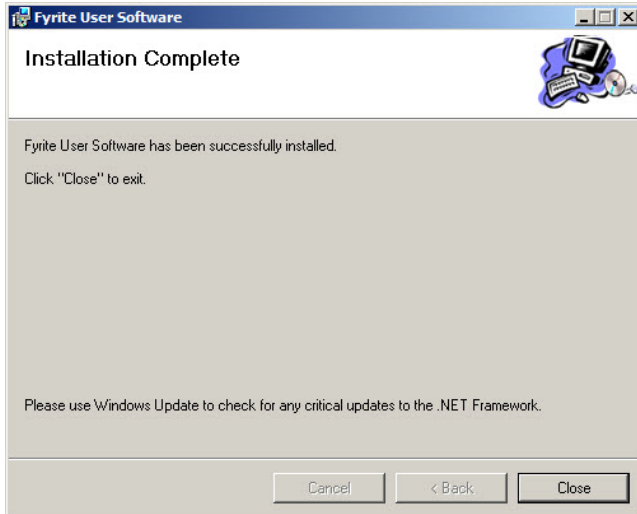
8. Click on Next.



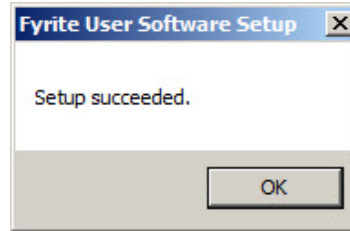
9. Wait for software to be installed.



10. Click on Close.



11. Click OK.



12. After installation

- Open Fyrite® User Software via the Start menu.
- Connect the instrument to the PC with a USB cable.
- Power up the unit.
- When first connected, a “Found New Hardware Wizard” screen will be displayed.

13. For further information about the use of this product, refer to your analyzer’s user manual.

5. Installation: Windows 8

After loading the CD, follow the instructions listed below.

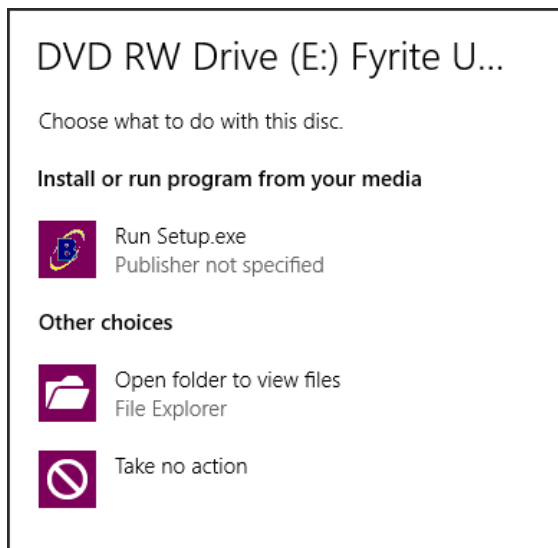
1. Run the setup program SETUP.EXE. To do this, follow the instructions below based on your system's configuration. Use the left column if Auto Play is enabled, or the right column if Auto Play is disabled.

If AUTO PLAY is enabled:

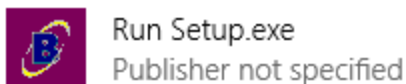
- Click the box below.

DVD RW Drive (E:) Fyrite User Software 3...
Tap to choose what happens with this disc.


- The following popup is displayed.

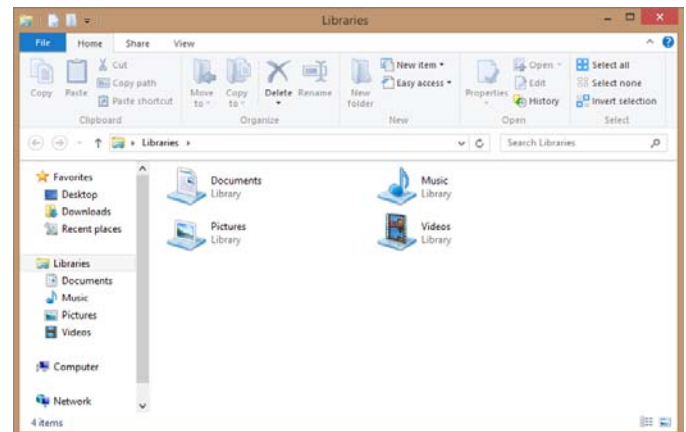



- Click the Run Setup.exe option.

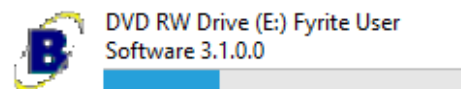


If AUTO PLAY is disabled:

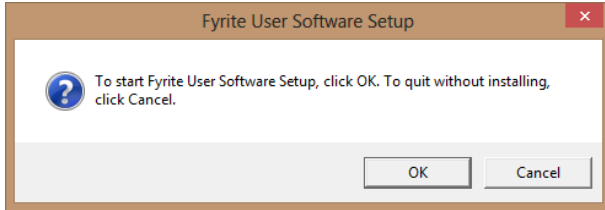
- Click the File Explorer icon () from the desktop or the Metro.
- The default explorer screen is shown.



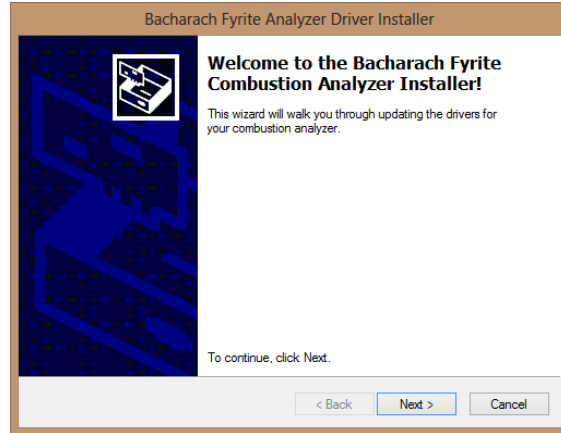
- Locate then click the computer icon ( Computer) in the left window pane.
- Double click the Fyrite User Software icon.



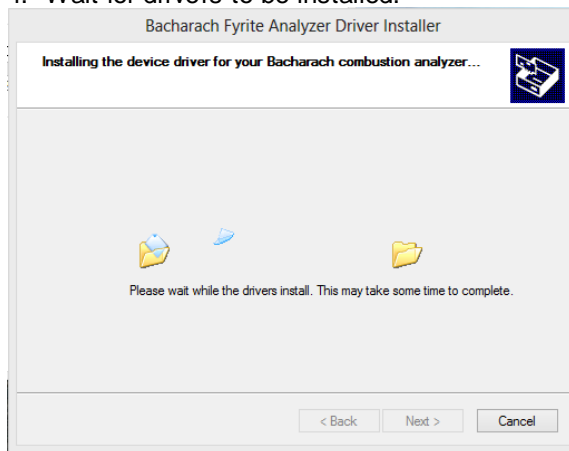
2. Click OK to start installation.



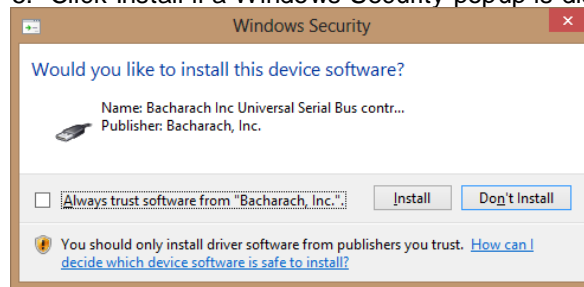
3. Click Next to continue.



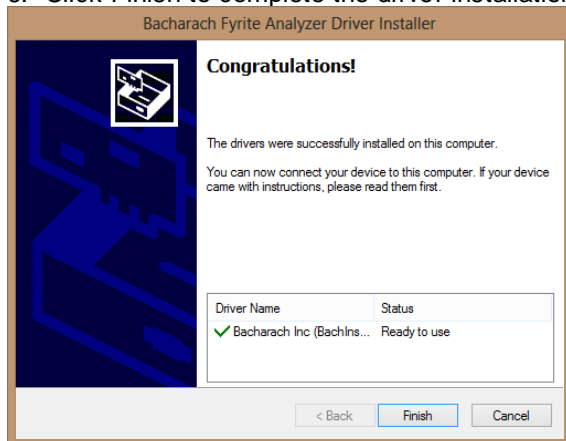
4. Wait for drivers to be installed.



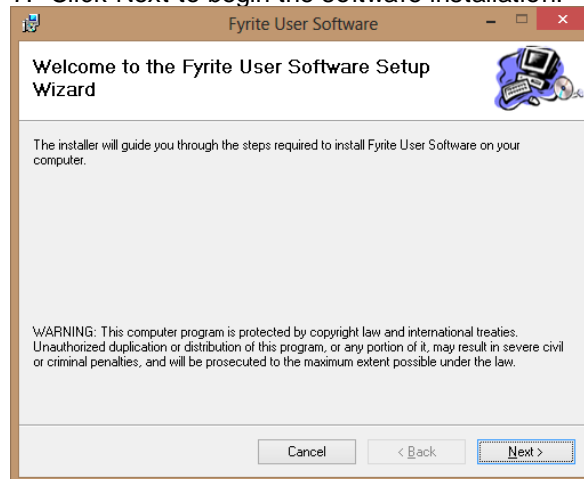
5. Click Install if a Windows Security popup is displayed.



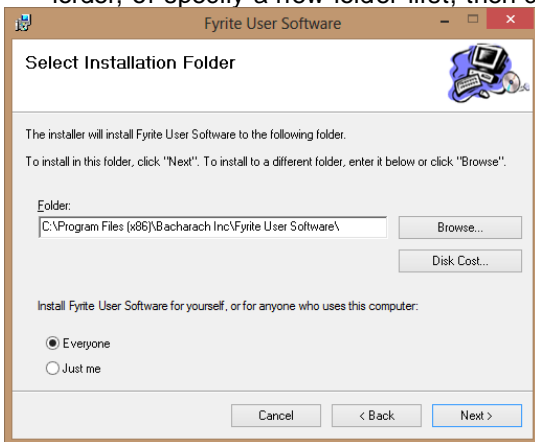
6. Click Finish to complete the driver installation.



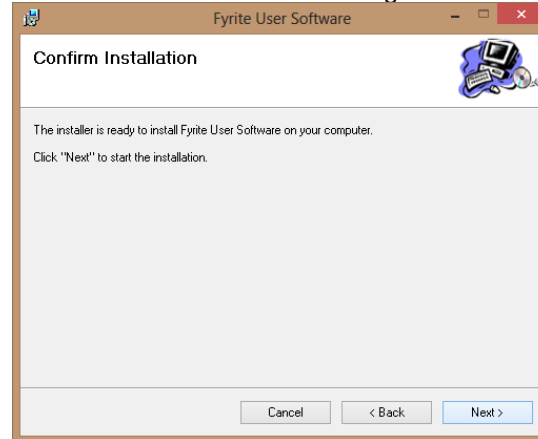
7. Click Next to begin the software installation.



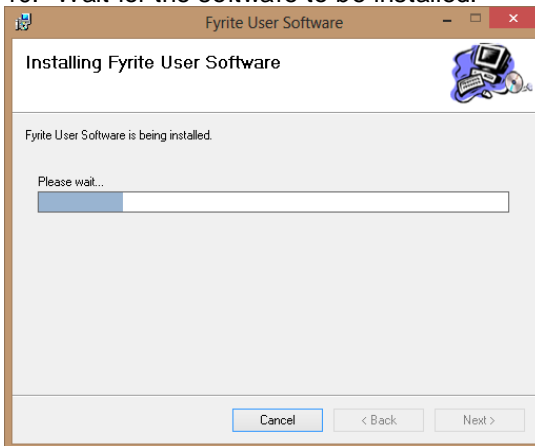
8. Click Next to install the software in the default folder, or specify a new folder first, then click Next.



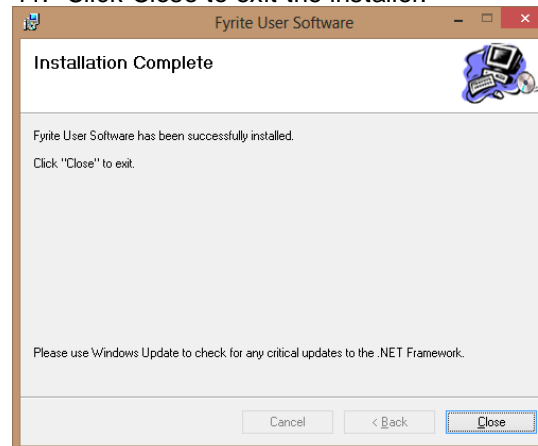
9. Click Next to confirm and begin the software installation.



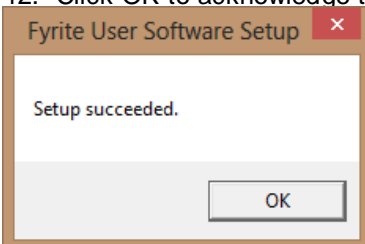
10. Wait for the software to be installed.



11. Click Close to exit the installer.



12. Click OK to acknowledge the successful setup.



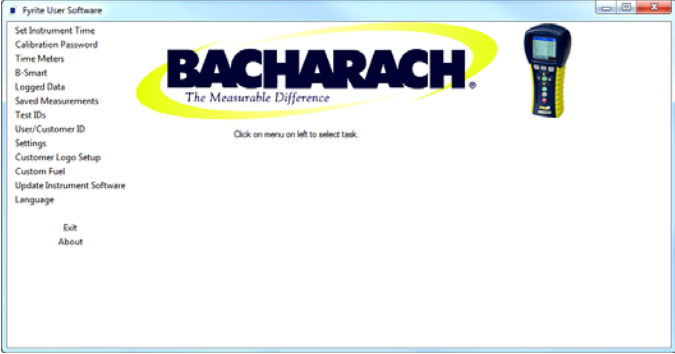
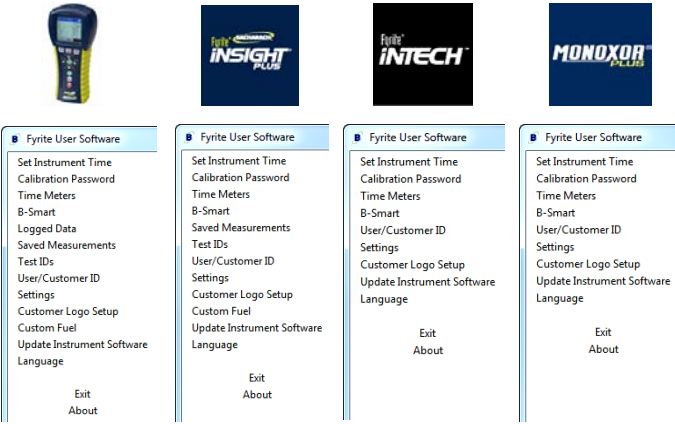
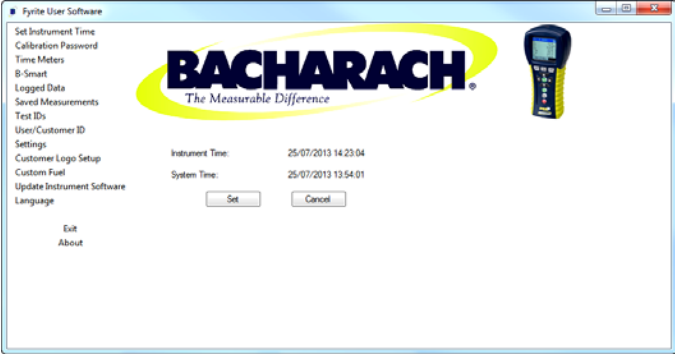
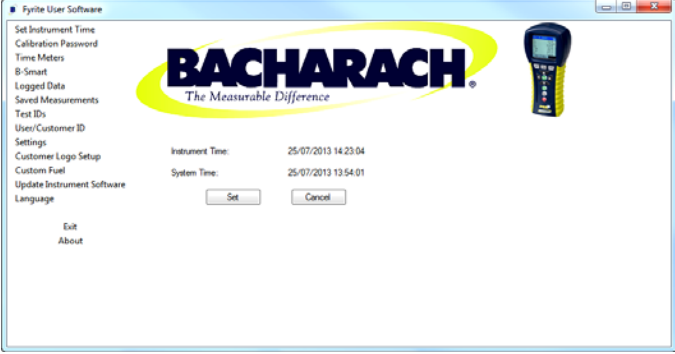
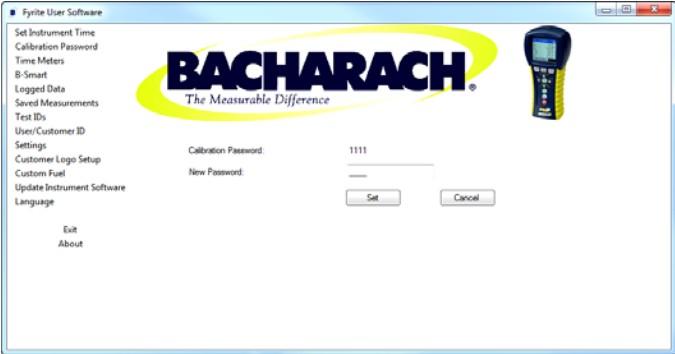


13. After installation:

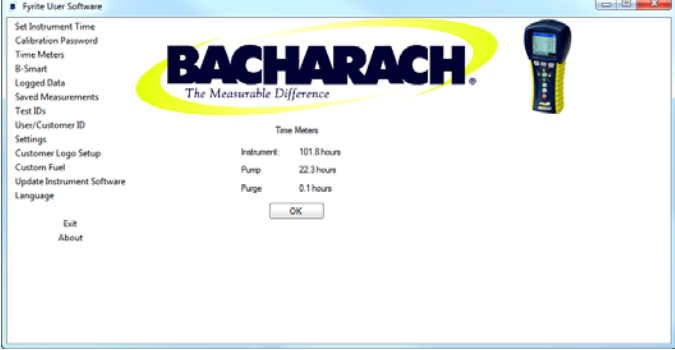
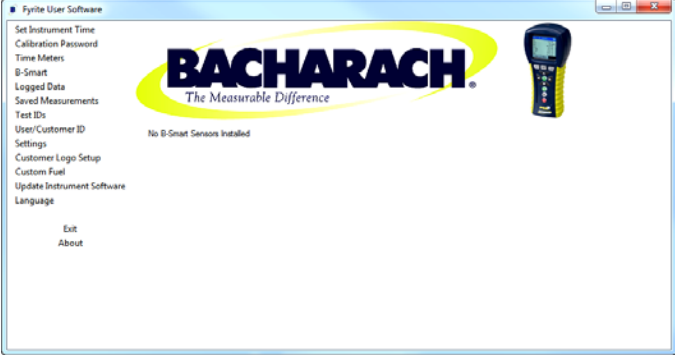
- Open Fyrite® User Software via the icon on the desktop or Metro user interface.
- Connect the instrument to the PC with a USB cable.
- Power up the unit.
- When first connected, a “Found New Hardware Wizard” screen will be displayed.

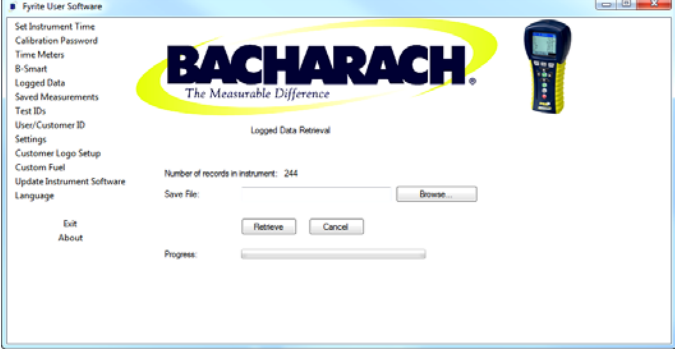
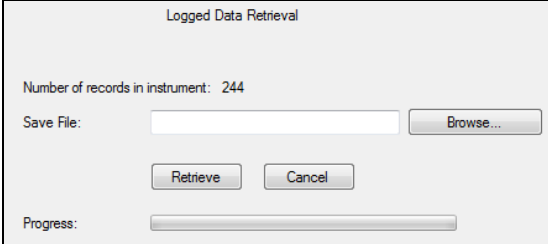
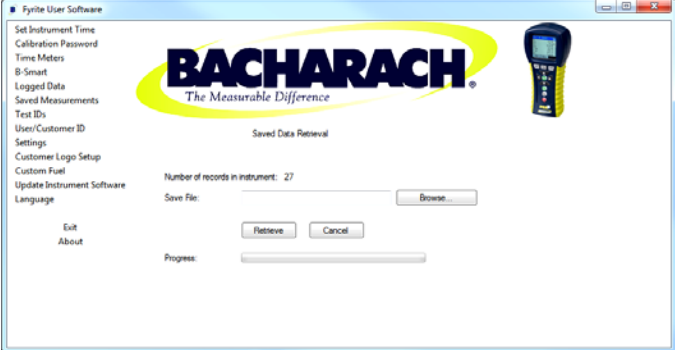
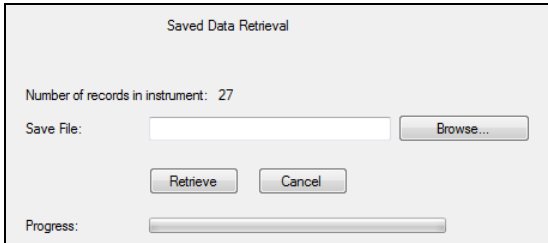
14. For further information about the use of this product, refer to your analyzer’s user manual.

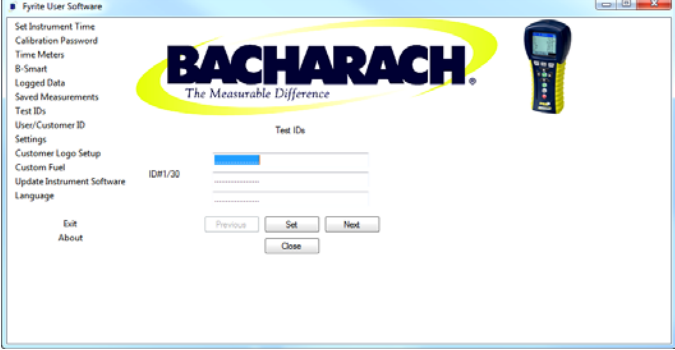
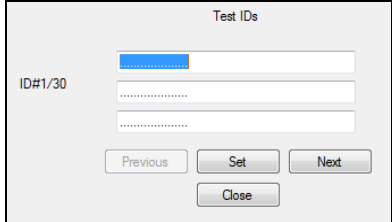
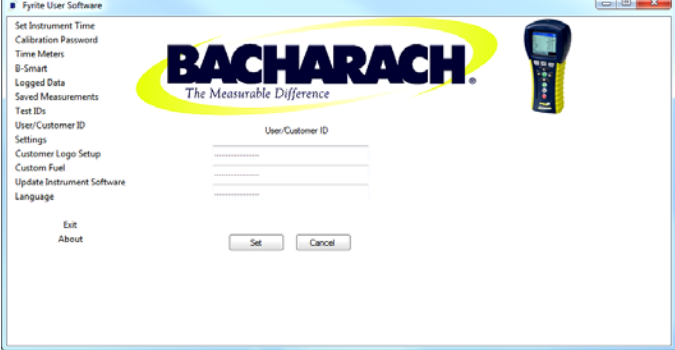
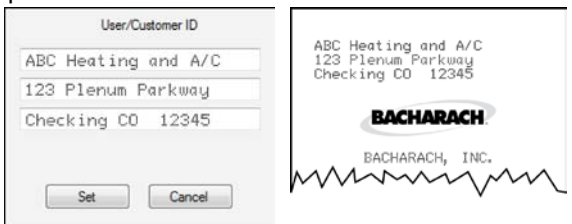
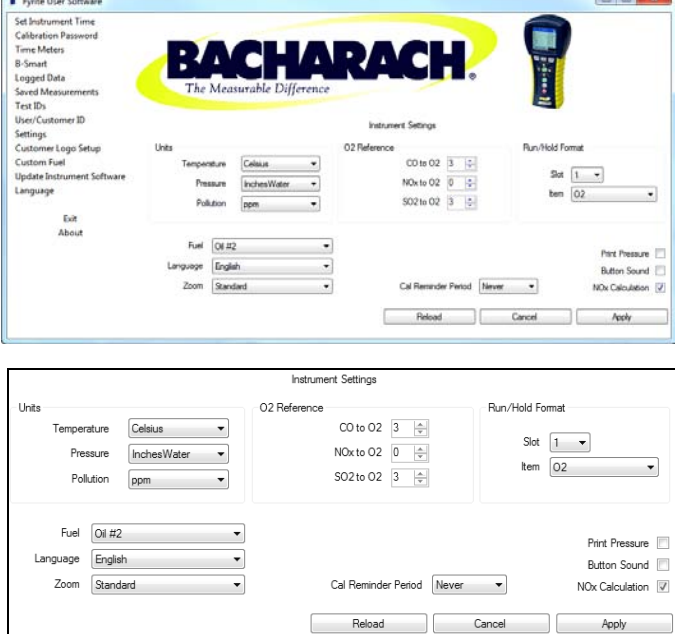
6. Fyrite® User Software Overview

This section shows sample menu screens of the Fyrite® User Software. Note that your screens may vary depending on the instrument that is connected.


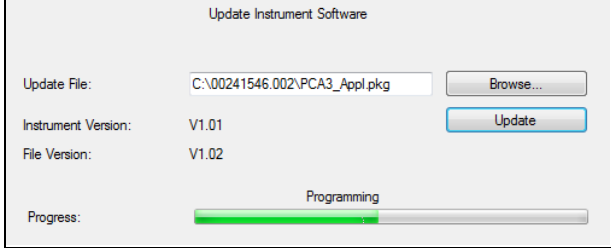
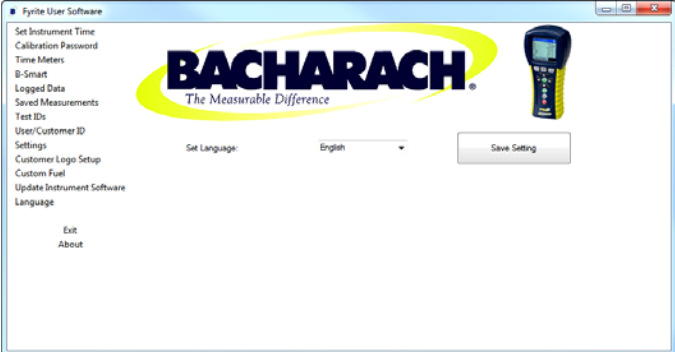
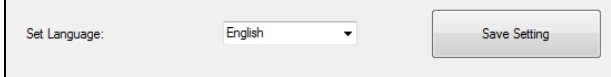

	Screen	Notes
Main Screen		<ul style="list-style-type: none"> A photo (or instrument name) appears to the right of the Bacharach logo if your device is turned ON and the USB cable is properly connected between the instrument and your PC.  If the software cannot communicate with your instrument (i.e., your instrument is not turned on, the USB is not properly connected, etc.), a question mark and silhouette are displayed.
Menus		<ul style="list-style-type: none"> The actual menu items that are displayed will vary based on the instrument that is connected and the version of firmware it is using. Example menus are shown at the left for PCA3®, INSIGHT® Plus, InTech®, and Monoxor® Plus instruments. Your screens may show different options. Other devices may be supported. Click on the desired menu option on the left.
Set Instrument Time		<ul style="list-style-type: none"> Reads the time from the connected instrument. Shows both the instrument's time and the PC's (system) time. Click "Set" to synchronize instrument with PC's system time. 
Calibration Password		<ul style="list-style-type: none"> Used to change the password needed to access the instrument's Calibration Menu. Reads and displays the existing password from the instrument. Useful if you have forgotten the instrument's password. To change the password, enter a new 4-digit code and click "Set". 

	Screen	Notes																				
<p style="writing-mode: vertical-rl; transform: rotate(180deg);">Time Meters</p>		<ul style="list-style-type: none"> Shows run times from the instrument. Shows the total number of hours that the instrument has been “On”, the pump has been “On”, and the instrument has been in purge mode. <div data-bbox="1112 388 1323 577" style="border: 1px solid black; padding: 5px; margin: 10px 0;"> <p style="text-align: center;">Time Meters</p> <p>Instrument: 101.8 hours</p> <p>Pump 22.3 hours</p> <p>Purge 0.1 hours</p> <p style="text-align: center;">OK</p> </div> <ul style="list-style-type: none"> Note that the “Purge” time meter shown in this example is only applicable to PCA instruments (which have separate purge pumps). Other instruments use their main pump to purge, so for those instruments the “Pump” time meter is used to capture purge time statistics. 																				
<p style="writing-mode: vertical-rl; transform: rotate(180deg);">B-Smart</p>	 <div data-bbox="227 1155 852 1386" style="border: 1px solid black; padding: 5px;"> <p>B-Smart Sensors Installed</p> <table border="1" style="width: 100%; border-collapse: collapse;"> <thead> <tr> <th>Sensor</th> <th>Last Calibration</th> <th>Cal Status</th> <th>Cal Type</th> <th>B-Smart Code Entry</th> </tr> </thead> <tbody> <tr> <td>CO-LO</td> <td>4/14/2011 8:10:46 AM</td> <td>Good</td> <td>Manual</td> <td>-</td> </tr> <tr> <td>NO</td> <td>8/23/2010 12:00:00 AM</td> <td>Good</td> <td>B-Smart</td> <td>PL-AB-KM-NR-G2</td> </tr> <tr> <td>NO2</td> <td>8/7/2010 12:00:00 AM</td> <td>Good</td> <td>B-Smart</td> <td>PL-AB-KM-NR-G2</td> </tr> </tbody> </table> <p>B-Smart Calibration</p> <p>Sensor to Calibrate: <input type="text" value=""/> <input type="button" value="Set"/></p> <p>B-Smart Code: <input type="text" value=""/> <input type="button" value="Clear"/></p> </div>	Sensor	Last Calibration	Cal Status	Cal Type	B-Smart Code Entry	CO-LO	4/14/2011 8:10:46 AM	Good	Manual	-	NO	8/23/2010 12:00:00 AM	Good	B-Smart	PL-AB-KM-NR-G2	NO2	8/7/2010 12:00:00 AM	Good	B-Smart	PL-AB-KM-NR-G2	<ul style="list-style-type: none"> Accesses B-Smart® sensor information from the instrument then displays it. Enter your new B-Smart® code to calibrate the instrument to match that B-Smart® sensor's internal calibration data. Entering your B-Smart® code through the software interface may be more convenient than using the instrument's keypad. If no B-Smart® sensor is installed in the instrument, a corresponding message is displayed. <div data-bbox="1052 1144 1367 1228" style="border: 1px solid black; padding: 5px; text-align: center;"> <p>No B-Smart Sensors Installed</p> </div>
Sensor	Last Calibration	Cal Status	Cal Type	B-Smart Code Entry																		
CO-LO	4/14/2011 8:10:46 AM	Good	Manual	-																		
NO	8/23/2010 12:00:00 AM	Good	B-Smart	PL-AB-KM-NR-G2																		
NO2	8/7/2010 12:00:00 AM	Good	B-Smart	PL-AB-KM-NR-G2																		

	Screen	Notes
<p>Logged Data</p>	 	<ul style="list-style-type: none"> • Used with instruments that provide automatic combustion test data logging (e.g., PCA3). • Save all logged data records from the instrument to a CSV-formatted file on your PC: <ul style="list-style-type: none"> • Enter a name for the file to be saved (use the Browse... button if desired to locate a desired target directory). • Click the Retrieve button to load all logged data records from the instrument and save them onto your PC in a CSV file with the file name you specified. • Shows the number of logged combustion test records saved in memory on the connected instrument. • Records have time and date stamps. • Read and evaluate logged data using any software program that supports comma-separated variable (CSV) format.
<p>Saved Measurements</p>	 	<ul style="list-style-type: none"> • Used to retrieve measurement data records that the operator saved (Save button) into the instrument's memory. Records vary based on instrument, but may include combustion tests, temperatures, pressure, CO ambient results, etc. • Save all data records from the instrument to a CSV-formatted file on your PC: <ul style="list-style-type: none"> • Enter a name for the file to be saved (use the Browse... button if desired to locate a desired target directory). • Click the Retrieve button to load all saved data records from the instrument and save them onto your PC in a CSV file with the file name you specified. • Shows the number of saved combustion test records in the instrument's memory. • Records have time and date stamps. • Read and evaluate saved data using any software program that supports comma-separated variable (CSV) format. • All test headings are shown in the CSV file. If tests were not performed, asterisks are shown in place of actual values.

	Screen	Notes
<p style="writing-mode: vertical-rl; transform: rotate(180deg);">Test IDs</p>		<ul style="list-style-type: none"> • Reads Test ID information from instrument. • Enter new Test ID information then download it to the instrument by clicking the Set button. • Using the software may be more convenient than using the instrument's keypad to enter Test IDs. • Use Next and Previous to navigate Test IDs. 
<p style="writing-mode: vertical-rl; transform: rotate(180deg);">User/ Customer ID</p>		<ul style="list-style-type: none"> • Reads User/Customer ID from instrument. • Enter new User/Customer ID information then download it to the instrument by clicking the Set button. • Using the software may be more convenient than using the instrument's keypad to enter Test IDs. • User/Customer ID information is used on printouts. 
<p style="writing-mode: vertical-rl; transform: rotate(180deg);">Settings</p>		<ul style="list-style-type: none"> • Read and change any settings you can set from the instrument's menus. • The actual settings that are displayed will vary based on the instrument that is connected. • Using the software may be more convenient than using the instrument's keypad. • Click Reload to read settings from instrument. • Click Apply to send values displayed on the screen to the instrument. • Refer to your instrument's instruction manual for descriptions and details of settings.

	Screen	Notes
<p>Customer Logo Setup</p>		<ul style="list-style-type: none"> • Used to add your custom logo to printouts when using the optional IrDA printer. • Size of logo file must be 384 pixels by 192 pixels (width x height). • Logo file must be one of the following files with these exact extensions: .BMP, .JPG, .PNG, and .TIFF. • Color logos are converted to black and white. • Enter logo file name or use Browse to locate. • Click Load Logo to read logo file and send it to the instrument to use as the new logo on printouts. • Click Default to revert to the Bacharach logo.
<p>Custom Fuel</p>		<ul style="list-style-type: none"> • Bacharach combustion analyzers support various combustion fuels. • If your application uses a fuel not supported, custom fuel equations may be added to certain instruments. • Use this screen to download one or more custom fuel data files that you requested and received from Bacharach. • Use Set buttons to select fuel file (from your PC) to download to instrument. Then you can select the custom fuel from your fuel menu. • Use the Clear buttons to remove custom fuel files so you can select standard supported fuel types.

	Screen	Notes
Update Instrument Software		<ul style="list-style-type: none"> Periodically, Bacharach makes software updates available for analyzers. Contact Bacharach for information on availability and receiving software updates. Bacharach provides a .PKG update file, which you copy to your PC. Enter the name of the file in the Update File field (or use the Browse... button) then press Update to download the new software file into the instrument. 
Language		<ul style="list-style-type: none"> Use the language screen to set the language displayed by the Fyrite® User Software. The Set Language drop-down list contains available languages for the connected instrument. Available languages vary by instrument. Refer to the Settings screen to set/change the language of the attached instrument. 
About		<ul style="list-style-type: none"> The About option displays a pop-up screen containing software version and copyright information.



Distributed By: The Safety Equipment Store®

www.thesafetyequipmentstore.com

Email: besafe@thesafetyequipmentstore.com

Click Here* to view this product group on The Safety Equipment Store® website.



Headquarters:
621 Hunt Valley Circle, New Kensington, PA 15068-7074
Toll Free: 1-800-736-4666 • Tel: +1-724-334-5000 • Fax: +1-724-334-5001
Website: www.MyBacharach.com • E-mail: help@MyBacharach.com

