

V-EDGE™ 2.4 m (8 ft.) Web Personal Fall Limiters



Lighter Weight for Leading Edge

MSA's patent-pending V-EDGE Web PFL provides a light weight solution for ANSI Z359.14-2014 and CSA Z259.2.2-2017 leading edge requirements.



Easy to Connect

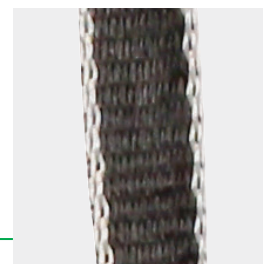
Get to work faster.
Save time and frustration with a sleek and simple locking pin attachment.*

* patent pending



Simplified Selection

The V-EDGE PFL can be used in a variety of applications where sharp edge hazards are a concern, making product selection simple.



Reduce Fatigue

Using web for the lifeline, the V-EDGE PFL weighs on average, 15% less than similar cable units—providing a lightweight option for leading edge applications.



WE KNOW WHAT'S AT STAKE.

V-EDGE™ PFLs



Ordering Information

Part Number	Type			Line Length	Line Type	Anchorage Connection	Harness Connection	Standards		
	Single-leg	Twin-leg	Tie-back					ANSI	OSHA	CSA
10192006	■			8 ft. (2.4 m)	Web	AL36CL Snaphook	Locking Pin	■	■	
10192039	■			8 ft. (2.4 m)	Web	36CS Snaphook	Locking Pin	■	■	
10192048	■			8 ft. (2.4 m)	Web	36CL Snaphook	Locking Pin	■	■	
10192007	■			8 ft. (2.4 m)	Web	AL36CL Snaphook	Locking Pin			■
10192040	■			8 ft. (2.4 m)	Web	36CS Snaphook	Locking Pin			■
10192049	■			8 ft. (2.4 m)	Web	36CL Snaphook	Locking Pin			■
10227164	■			8 ft. (2.4 m)	Web	Coated Snaphook	Locking Pin	■	■	
10192009		■		8 ft. (2.4 m)	Web	AL36CL Snaphook (2)	Locking Pin	■	■	
10192042		■		8 ft. (2.4 m)	Web	36CS Snaphook (2)	Locking Pin	■	■	
10192051		■		8 ft. (2.4 m)	Web	36CL Snaphook (2)	Locking Pin	■	■	
10192010		■		8 ft. (2.4 m)	Web	AL36CL Snaphook (2)	Locking Pin			■
10192043		■		8 ft. (2.4 m)	Web	36CS Snaphook (2)	Locking Pin			■
10192052		■		8 ft. (2.4 m)	Web	36CL Snaphook (2)	Locking Pin			■
10227165		■		8 ft. (2.4 m)	Web	Coated Snaphook (2)	Locking Pin	■	■	
10192519	■		■	9 ft. (2.9 m)	Web	FP5K Snaphook	Locking Pin	■	■	
10192516		■	■	9 ft. (2.9 m)	Web	FP5K Snaphook (2)	Locking Pin	■	■	



Note: This Bulletin contains only a general description of the products shown. While product uses and performance capabilities are generally described, the products shall not, under any circumstances, be used by untrained or unqualified individuals. The products shall not be used until the product instructions/user manual, which contains detailed information concerning the proper use and care of the products, including any warnings or cautions, have been thoroughly read and understood. Specifications are subject to change without prior notice. MSA is a registered trademark of MSA Technology, LLC in the US, Europe, and other Countries. For all other trademarks visit <https://us.msasafety.com/Trademarks>.

MSA operates in over 40 countries worldwide. To find an MSA office near you, please visit [MSAsafety.com/offices](https://us.msasafety.com/offices).